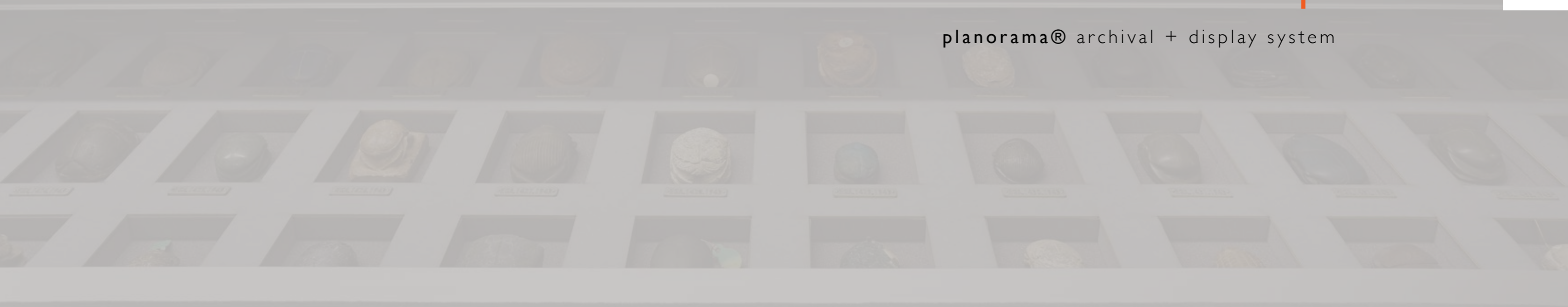


**ARMOUR SYSTEMS™**



planorama® archival + display system



### Planorama® archival + display system

Made from inert anodised aluminium, Planorama® is a bespoke, archival drawer cabinet system. It can be built to almost any size and configuration with drawers that can range in depth from 10mm to as deep as required.

- lightweight giving low floor loading
- space efficient with only 2mm required between drawers
- drawers larger than AO can be supplied
- dust brushes fitted to every drawer
- standard finish in natural silver but can be anodised or powder coated to your specification
- systems can be fitted with a glazed top for display purposes
- drawers can be fitted with secure lockable glass tops

[1] *Fitzwilliam Museum, Cambridge*

[2] *G.L. Watson, Liverpool*

[3] *Soldiers of Gloucester*

[4] *The British Museum*  
© Trustees of the British Museum

[5] *The British Museum*  
© Trustees of the British Museum

[6] *Musashino University, Japan*

[7] *Fitzwilliam Museum, Cambridge*

[8] *Fitzwilliam Museum, Cambridge*

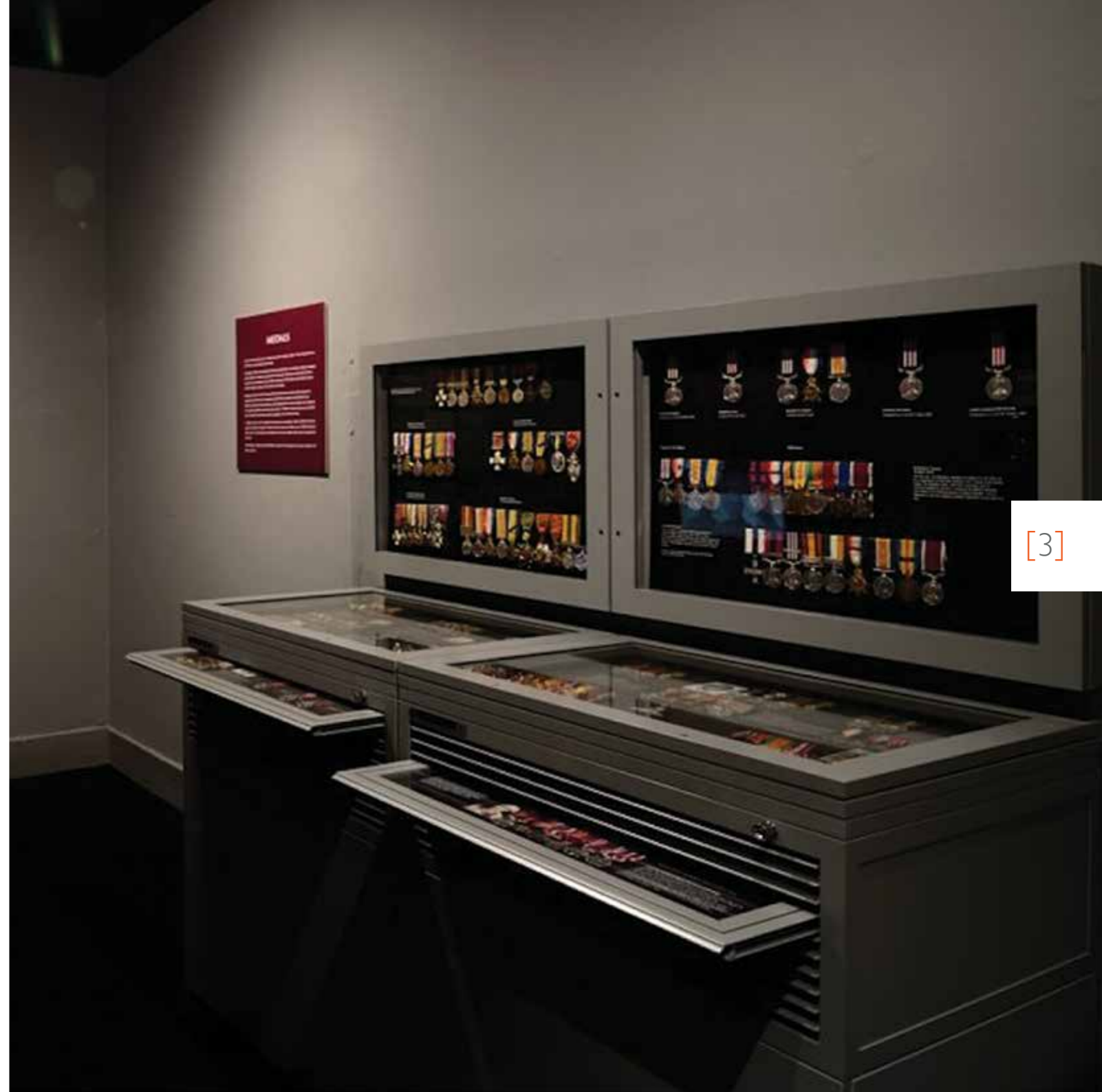




[2]



[3]





[4]



[5]

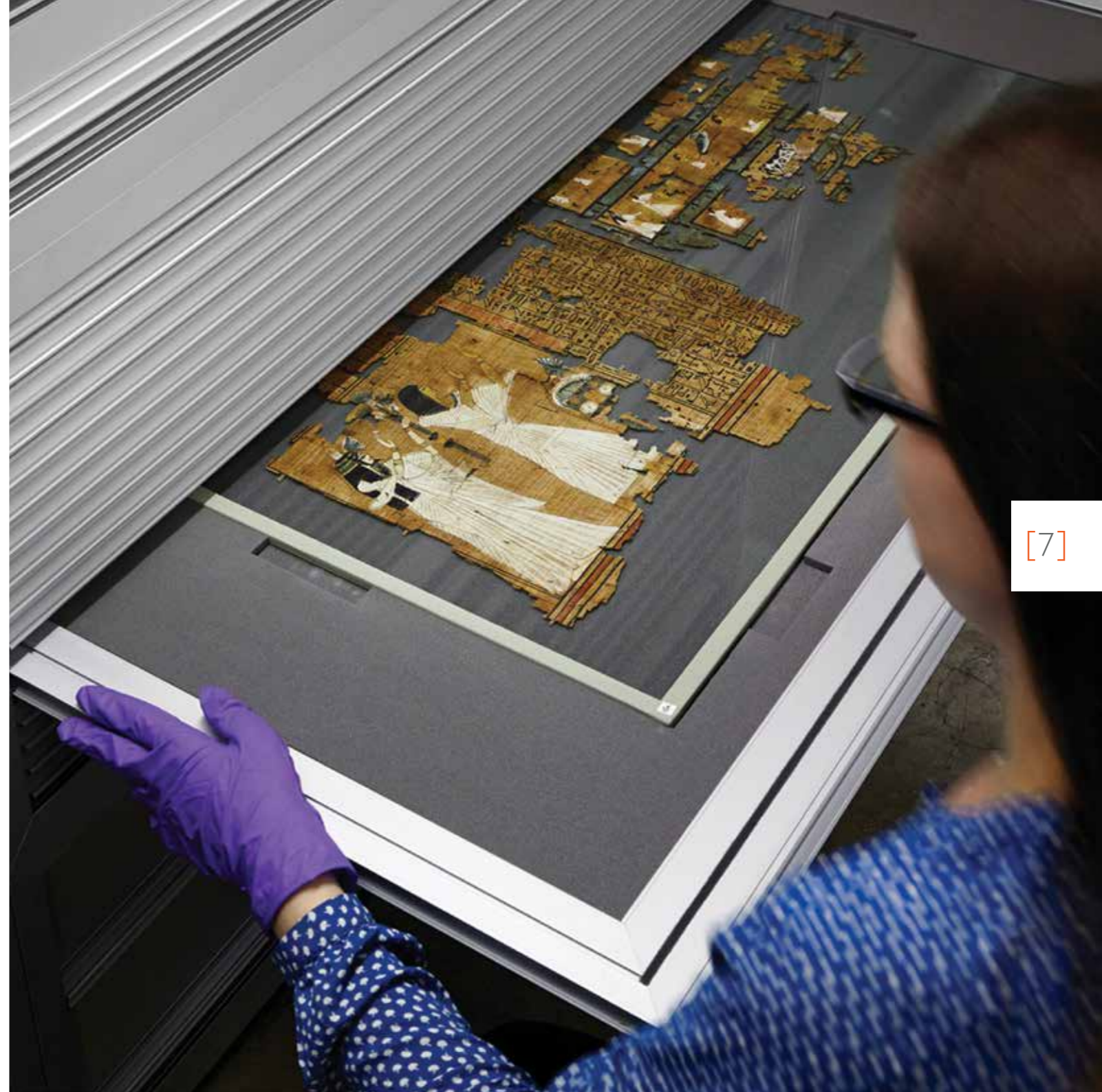




[6]



[7]





[8]



### **Armour Systems Limited**

Unit J Lyon Road,  
Denbigh West,  
Milton Keynes, MK1 1EX  
United Kingdom

**DL** +44 (0) 1908 377333  
**E** [sales@armour-systems.com](mailto:sales@armour-systems.com)  
[www.armour-systems.com](http://www.armour-systems.com)

### **Registered Office:**

Unit J Lyon Road, Denbigh West,  
Milton Keynes MK1 1EX

**Armour Systems Limited company  
registration number:**  
08475897

**Armour Systems Limited VAT:**  
GB365 706087

### *North American office:* **Armour Systems**

Janesville Innovation Centre  
2949 Venture Drive, Suite 106,  
Janesville, WI 53546  
United States

**DL** | (608) 554-1063  
**E** [ben@armour-systems.com](mailto:ben@armour-systems.com)  
[www.armour-systems.com](http://www.armour-systems.com)